



# **SHORE IDLER GUIDE UPGRADE TECHNICAL INSTRUCTIONS**

Dear dealer,

Please review the following document outlining an upgraded idler guide for the Norco Shore A1, A2, and Park. For the upgraded idler guide kit please contact Norco customer service team.

## **Models affected:**

- MY21-MY23 Shore A1, requires A1 and A2 idler kit
- MY21-MY23 Shore A2, requires A1 and A2 idler kit
- MY21-MY23 Shore Park, requires Park kit

## **Issues identified:**

- All models - Upper idler guide movement resulting in possible chain drop
- All Models - Clearance between idler guide mount and frame requires a Specialty tool
- Shore Park only - Lack of lower chainguide resulting in possible chain drop
- Shore Park only - Short oem chain

## **Solution:**

- New V3 inner and outer idler cover plates have been designed with an anti-rotation feature
- Shim stock has been designed to give the guide outboard adjustment for alignment/function
- A new Specialty tool has been designed to aid in installation and maintenance of the idler cover with T25 at one end 3mm hex at the other end
- Park Shore Only - An E-13 chainguide is to be supplied and installed along with a longer 114 link chain

## **Action:**

Please review the kits and instructions below for installation onto the bike.

### V3 - A1 and A2 kit - 919021-003

- Inner and outer idler plates
- 4 adjustment shims
  - 2 x 1mm
  - 1 x 0.50mm
  - 1 x 0.25mm
- specialty tool



### V3 - Park kit - 919021-004

- Inner and outer idler plates
- 4 adjustment shims
  - 2 x 1mm
  - 1 x 0.50mm
  - 1 x 0.25mm
- Specialty tool
- E13 Chainguide
- New 114 link chain



specialty Tool



# SHORE PARK CHAINGUIDE DISASSEMBLY

*For Shore A1 and A2 models skip to SHORE IDLER GUIDE DISASSEMBLY*

## Step 1

Remove the chain and cranks from the bike, the crank may differ from what is shown in this document so the procedure may be different. The original chain is to be set aside as it will not be re-installed.



## Step 2

Remove the oem bashguard from the bike



## SHORE PARK CHAINGUIDE ASSEMBLY

### Step 1

Install the supplied E13 chainguide following the manufactures installation guide.





## Step 2

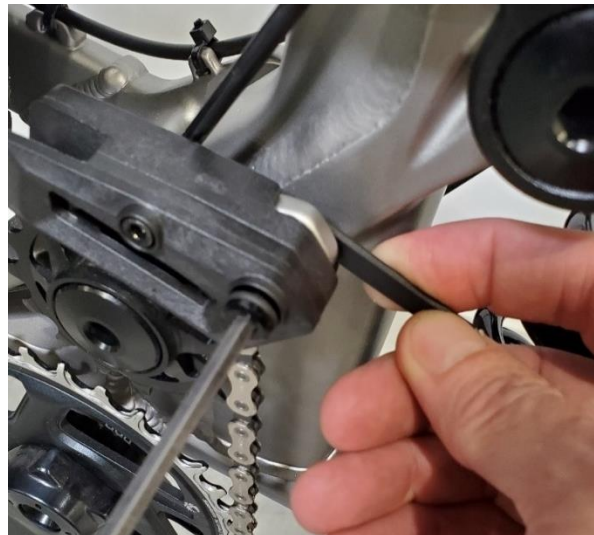
Install the cranks and the new 114 link chain. Proceed to SHORE IDLER GUIDE DISASSEMBLY



## SHORE IDLER GUIDE DISASSEMBLY

### Step 1

Using the specialty tool, place the T25 end into the fixing hardware on the backside of the idler guide. Now using a 4mm allen key on the front side loosen the hardware while using the specialty tool to hold the fixing hardware in place.



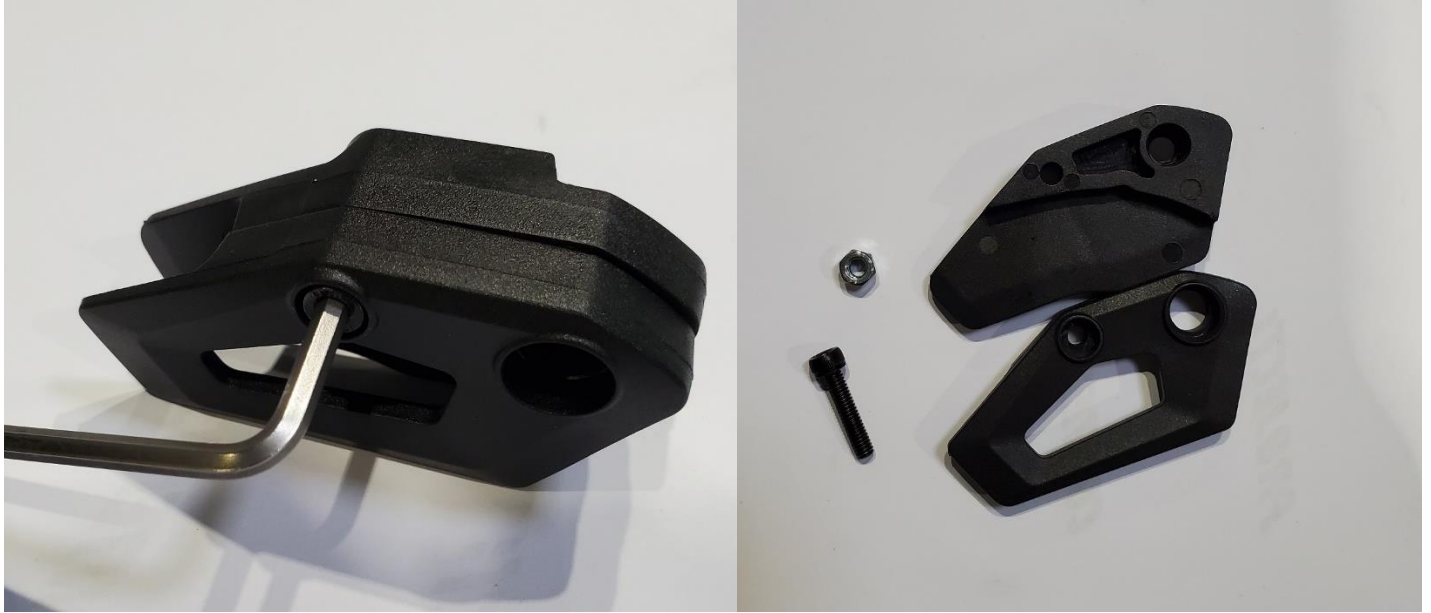
## Step 2

Remove the main pivot fixing nut from the non-driveside and press the main pivot shaft through the frame until flush with the bearing to allow for easier removal of the V2 inner and outer guide plates. Leave the fixing hardware and tool in the bike.



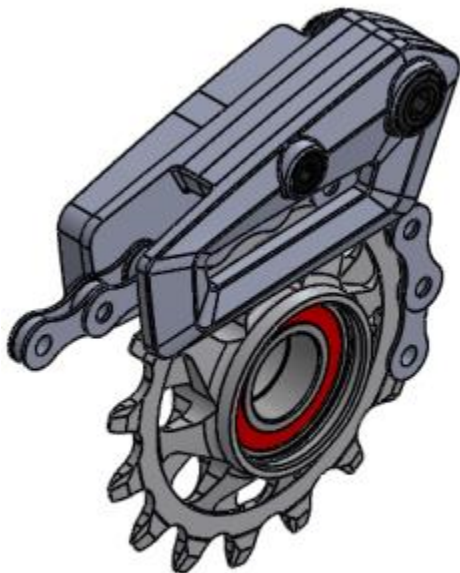
### Step 3

Once the v2 idler guide plates are removed from the bike remove rear the M4 bolt and fixing nut. Save hardware for use in the new V3 plates. To prevent mixing plates, please recycle the old v2 plates. Assemble the new V3 plates together with the m4 hardware and torque to 2nm.



## UPGRADED SHORE IDLER GUIDE

Reference guides:



ISOMETRIC VIEW

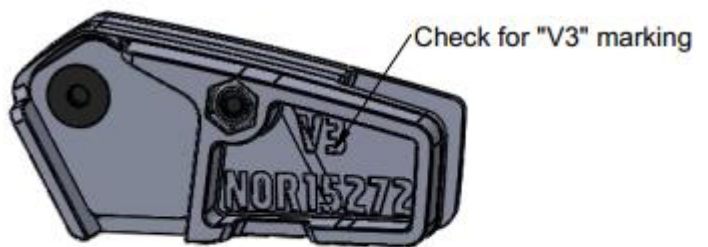


Fig 1.1 Part Markings

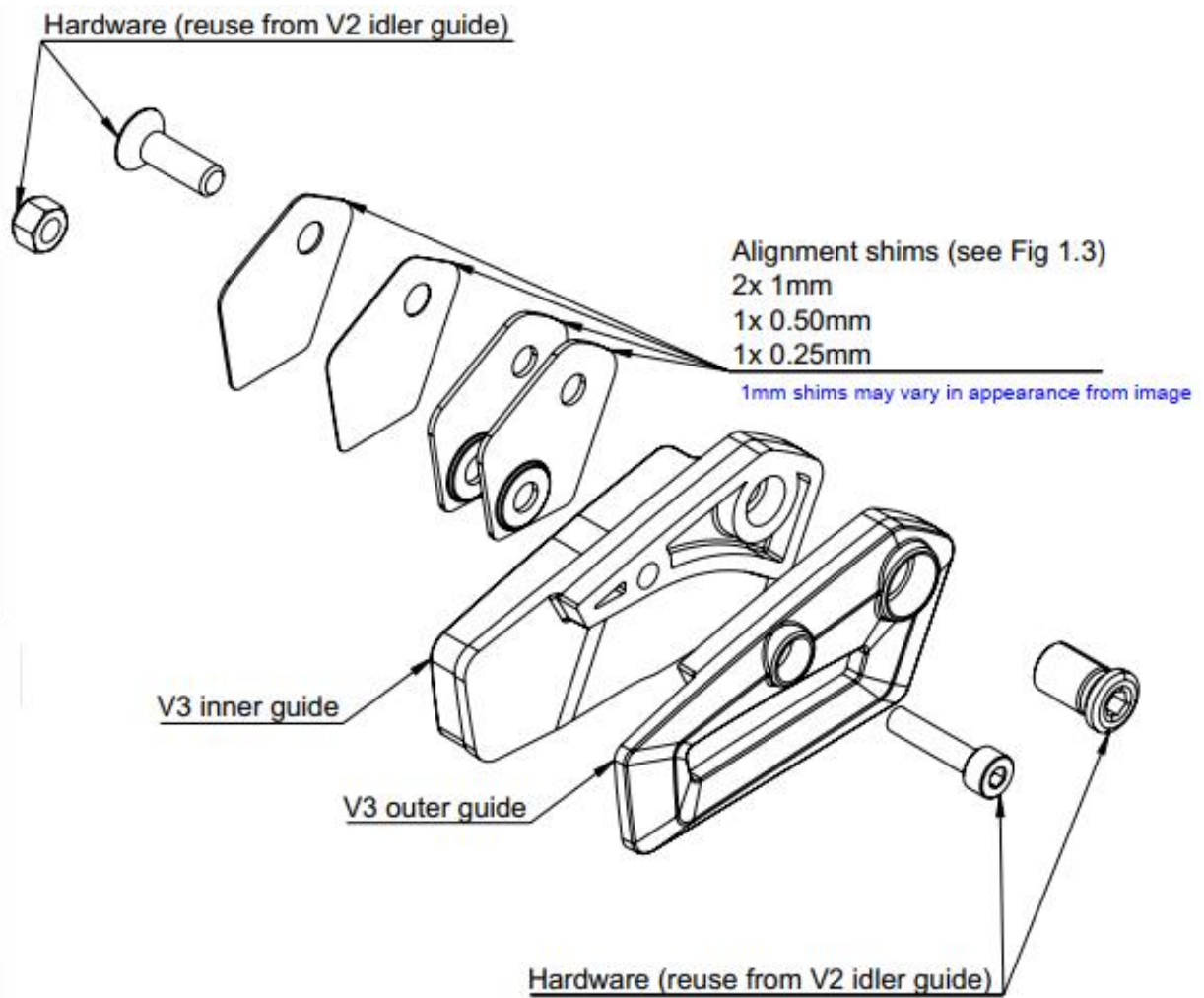


Fig 1.2 Assembly Parts



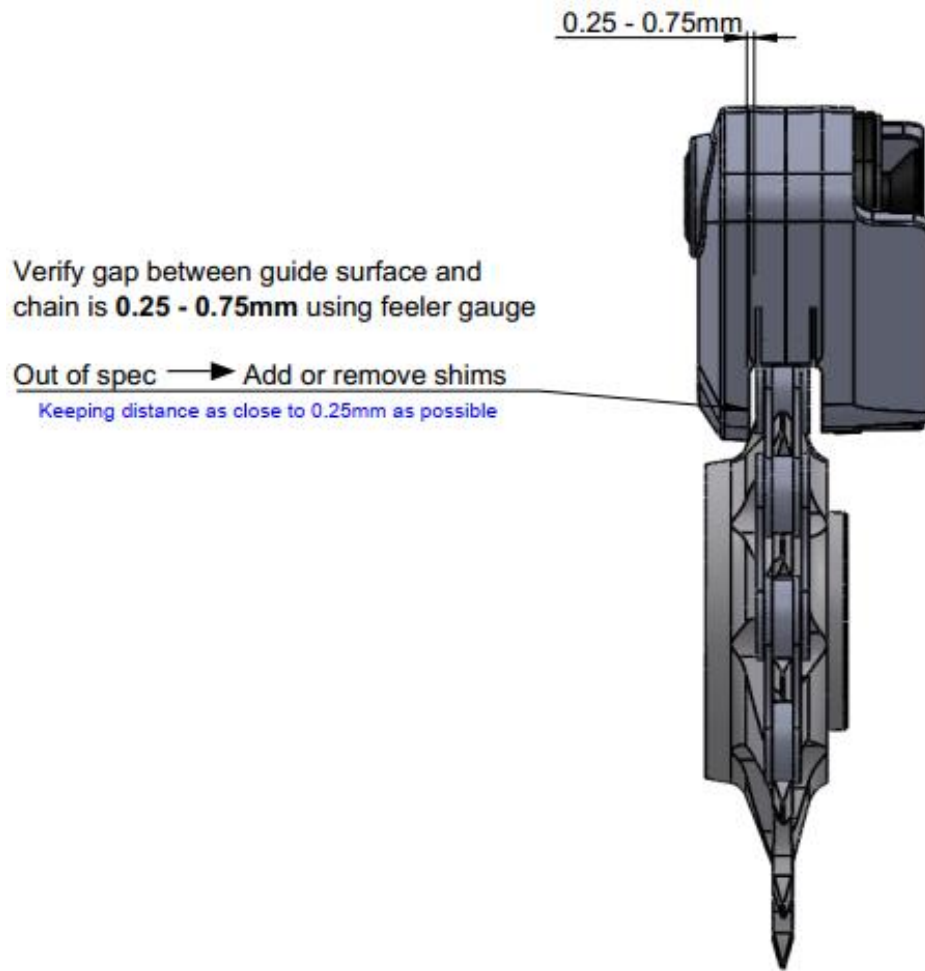
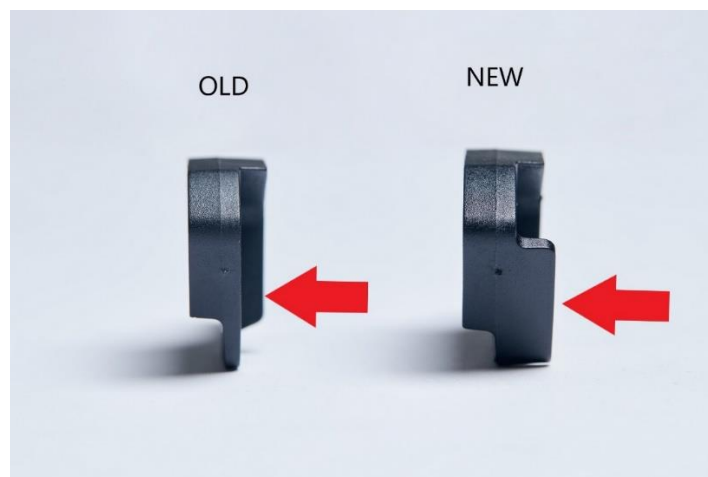


Fig 1.3 Lateral Alignment

Take note of the new anti-rotational design of the new V3 inner plate below along with the embossed “V3” marking as shown on supplied instruction sheet.



# SHORE IDLER GUIDE ASSEMBLY

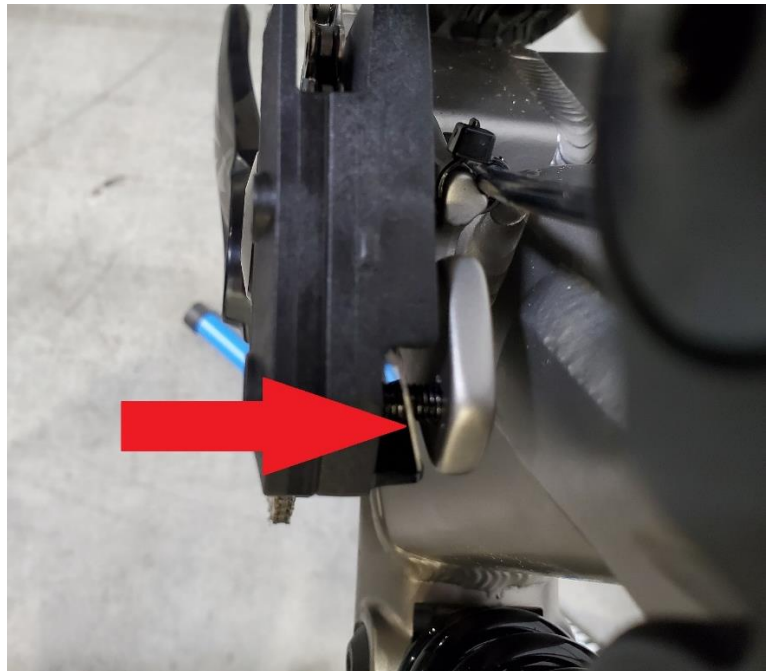
## Step 1

Assemble the new V3 guide plates together with the m4 hardware and torque to 2nm.



## Step 2

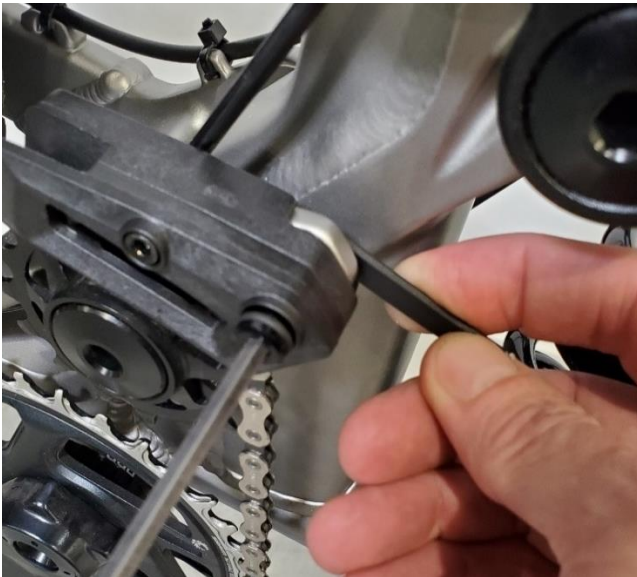
Starting with the 0.50mm shim on the backside of the guide, install the assembled V3 guide onto the bike and push idler pulley towards the frame. While holding the idler guide in place check the gap between the inside of the outer guide plate and outside of the chain. The gap should be between 0.25mm - 0.75mm but as close to 0.25mm as possible. Add additional shims as need to achieve the proper spacing. You can use the 0.25mm shim baseline to set up the desired gap. Note you may end up needing the 0.25mm shim it is not just for measuring purposes.





### Step 3

Once a gap of 0.25mm – 0.75mm is achieved tighten the idler guide mounting bolt to 2Nm. Install and tighten main pivot fixing nut to 18nm.



The upgrade process is now completed for the A1, A2 and Park model bikes.

Thank you,  
Norco Bicycles